

*School District
of Ashland*

ASHLAND HIGH SCHOOL



Adding Value to Everything We Do

The following is a list of work performed in the last 30 days:

- Completed demo for Charter Classroom and Guidance Offices
- Steel stud partition framing and sheetrock in Charter Classroom
- HVAC rough-in for Charter Classroom and Guidance Offices
- Electrical rough-in for Charter Classroom and Guidance Offices
- Taping sheetrock for Charter Classroom
- Started painting in Charter Classroom

The following is a list of work scheduled for the next 30 days:

- Work scheduled for next 30 days
- Complete painting in Charter Classroom and Guidance Offices
- Install ceilings and flooring in Charter Classroom and Guidance Offices
- HVAC and Electrical Finishes in Charter Classroom
- Demolition in the remainder of Phase 3
- Install remaining split joist east of auditorium
- Start electrical upgrades in auditorium
- Framing new partitions for FACE and Art
- Electrical and HVAC rough-ins for FACE and Art

Schedule:

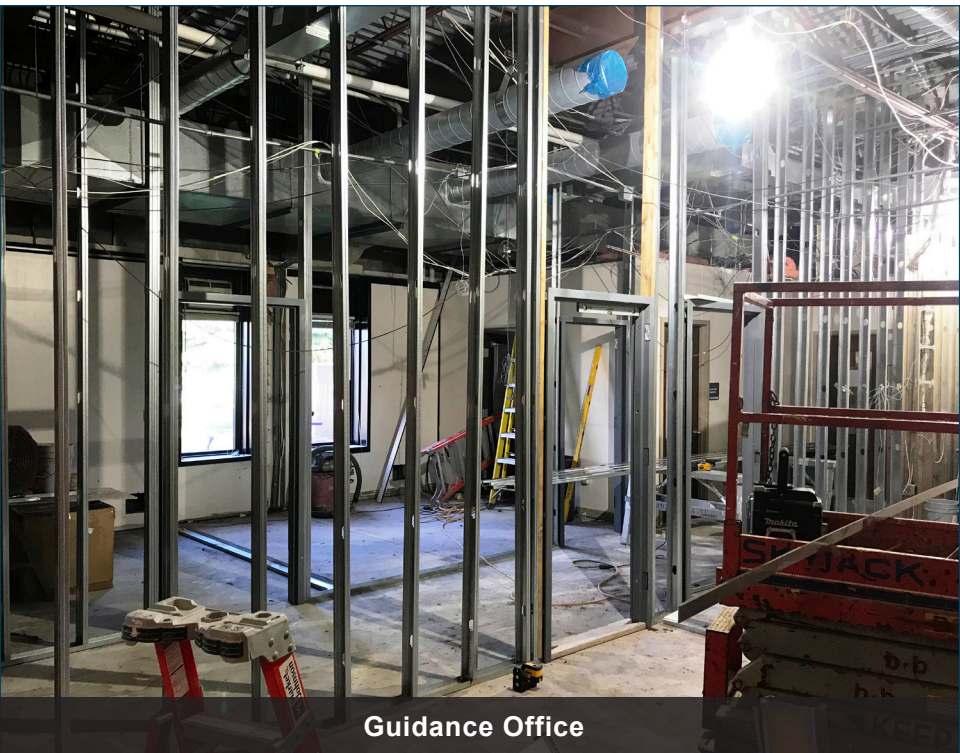
Substantial Completion for Phase 3 August 17, 2018
Final Completion August 31, 2018



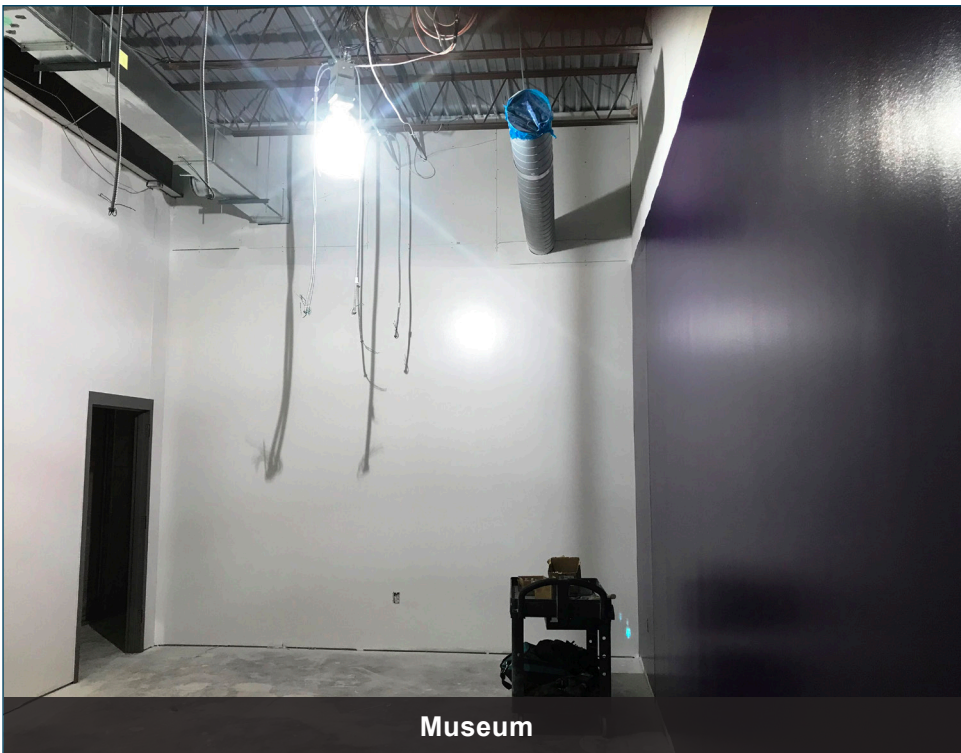
Charter Classroom



Charter Classroom Interior



Guidance Office



Museum